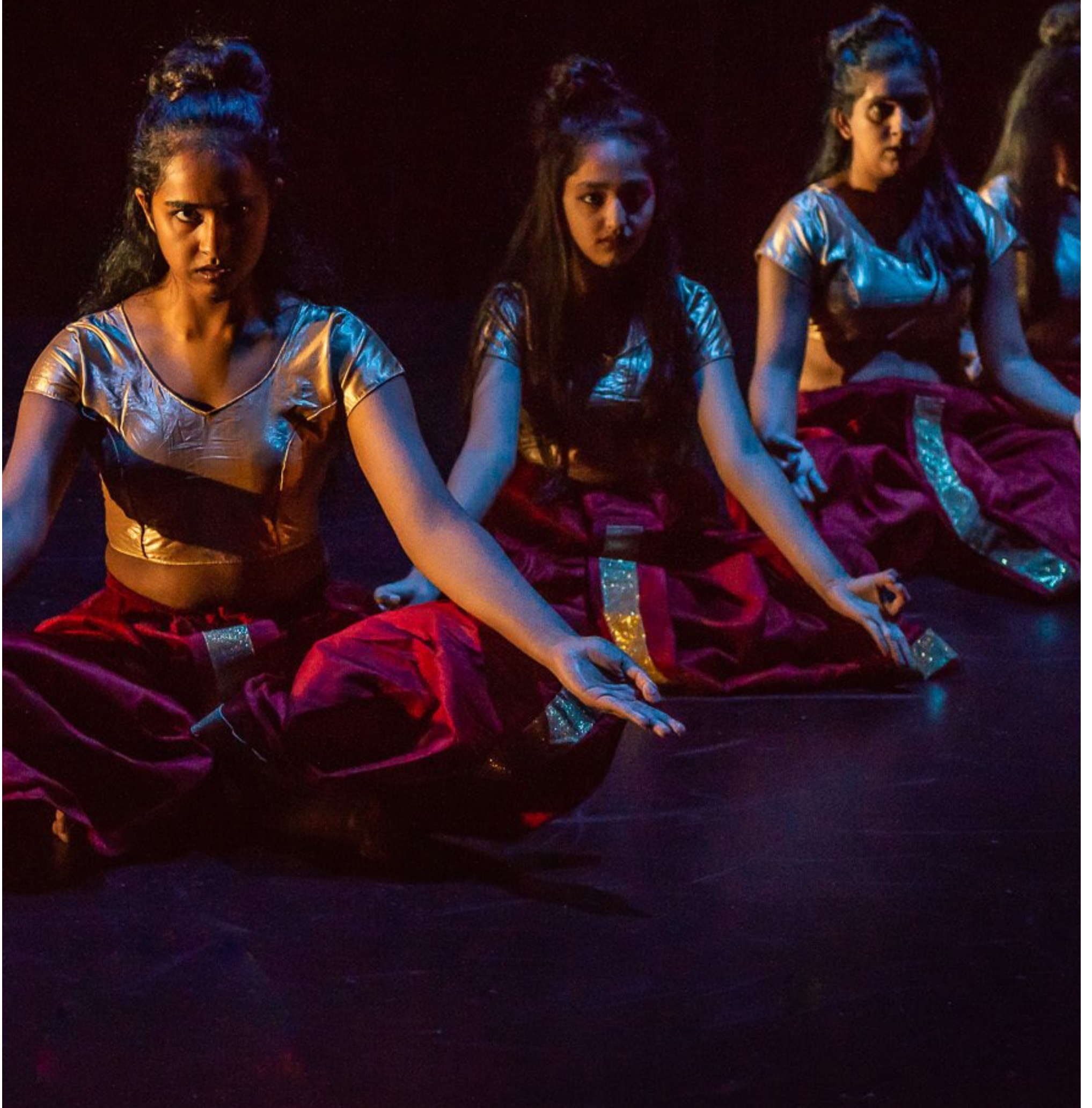


TAPAC

THE AUCKLAND PERFORMING ARTS CENTRE

Theatre Hire Information



About

TAPAC is a vibrant performing arts hub offering high-quality creative arts education and facilities to Auckland's diverse creative communities. Affordable, inclusive and accessible, TAPAC offers a nurturing and supportive environment where emerging and established artists can connect through their collective love of the performing arts.

TAPAC is a registered charity and all profits go back into providing exciting, quality and affordable performing arts programmes for the community.

TAPAC's theatre is where festivals, theatre, dance and circus shows come to life. Create and develop work here or stage a fully-fledged production.

TAPAC's theatre is a flexible, easily accessible space. It can also be turned into a complete black box for filming purposes.

Venue information

Address

100 Motions Road, Western Springs, 1022, Auckland

Contacts

Phone: 09 845 0295

General enquiries: info@tapac.org.nz

Technical enquiry: technical@tapac.org.nz

Booking enquiry: community@tapac.org.nz

Socials

Instagram: [@tapacakl](https://www.instagram.com/tapacakl)

Facebook: [/TAPACakl](https://www.facebook.com/TAPACakl)

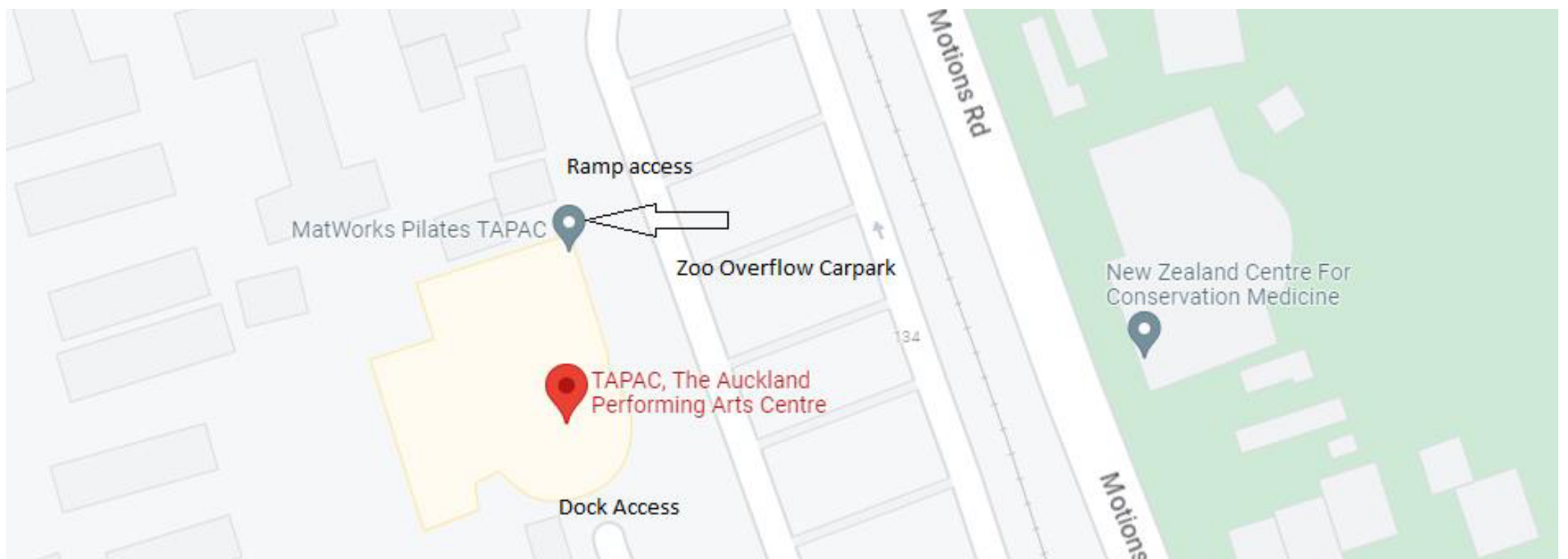
Web: tapac.org.nz

Parking

Zoo overflow carpark: \$2/h (\$8 cap) 9am-5pm (free outside of those hours)

Motions road: Free, maximum 3 hour stay

Access to TAPAC Staff Carpark is not included in theatre or studio hire.



General Information

TAPAC's theatre is a flexible black-box space, which can be altered to best suit the creative intention of your show.

The theatre includes the following features:

- A lighting grid at 6m above stage
- Full set of black drapes
- Cyclorama suitable for projection
- Mezzanine control room
- Basic lighting rig and desk. Please see Lighting Rig for more information on the standard configuration.
- Sound System
- Sprung floor
- Air-conditioning
- Loading bay with direct access to stage
- Two dressing rooms
- Hydraulic hoist to assist rigging
- High rated rigging points for aerials
- 600mm high stage desks with a maximum area of 48 m²
- Movable seating blocks and pit seating available
- Two dressing rooms
- Green room

Access: Ramp access from side of building & loading dock from TAPAC carpark.

Access Dimensions:

- Roller door: 2300mm (W) x 2400mm (H)
- Stage door: 2200mm (W) x 2400mm (H)
- Dock clearance: 3000mm (W) x 3400mm (H)



Rate Card

THEATRE USE

Full day (Up to 10 hours)	\$650.00 +GST
Half day (Up to 5 hours)	\$450.00 +GST
Dark day (Client not in theatre)	\$280.00 +GST
Overtime Charges (Hourly rate after 10 hours)	\$80.00 +GST

STAFF COSTS

Venue Technician (Hourly Rate)	\$45.00 +GST
Lighting and/or Sound Operator (Hourly Rate)	\$45.00 +GST
Additional technical crew (Hourly Rate)	\$45.00 +GST
Front of House Staff (Hourly Rate)	\$35.00 +GST
Box Office Attendant (Hourly Rate)	\$35.00 +GST
Utilities & Consumables (Day Rate)	\$35.00 +GST

ADDITIONAL EQUIPMENT FOR HIRE

Stage Decks (Free for onsite hire. Off-site hire is charge per deck, per day)	\$25.00 +GST
Haze and Isolation Charge (flat rate with consumables included)	\$120.00 +GST
Projector	\$260.00 +GST flagfall & \$100.00 +GST per additional day
Dance Floor (per roll)	\$20.00 +GST flagfall & \$2.00 +GST per day
Bubble Machines (flat rate with consumables included)	\$100.00 +GST



Ticketing Fees

INSIDER FEES (Paid to iTICKET and TAPAC by the Venue Hirer)

Pre-Sale and Door Sale

- Tickets priced \$0.01 - \$15.00 \$1.50 per ticket
- Tickets priced \$15.01 and above \$2.00 per ticket

Complimentary and Hardcopy tickets

- limited to 10% of tickets sold per event - any additional tickets at pre-sale rate \$0.58 per ticket

Other

- Upsell/Add-ons, F&B, Merchandise, etc \$1.0 per ticket/add on sold

Voluntary Contribution Offer

- VCO/Donation No fees applied

OUTSIDE FEES (Paid to iTICKET by your patrons)

Booking Fees

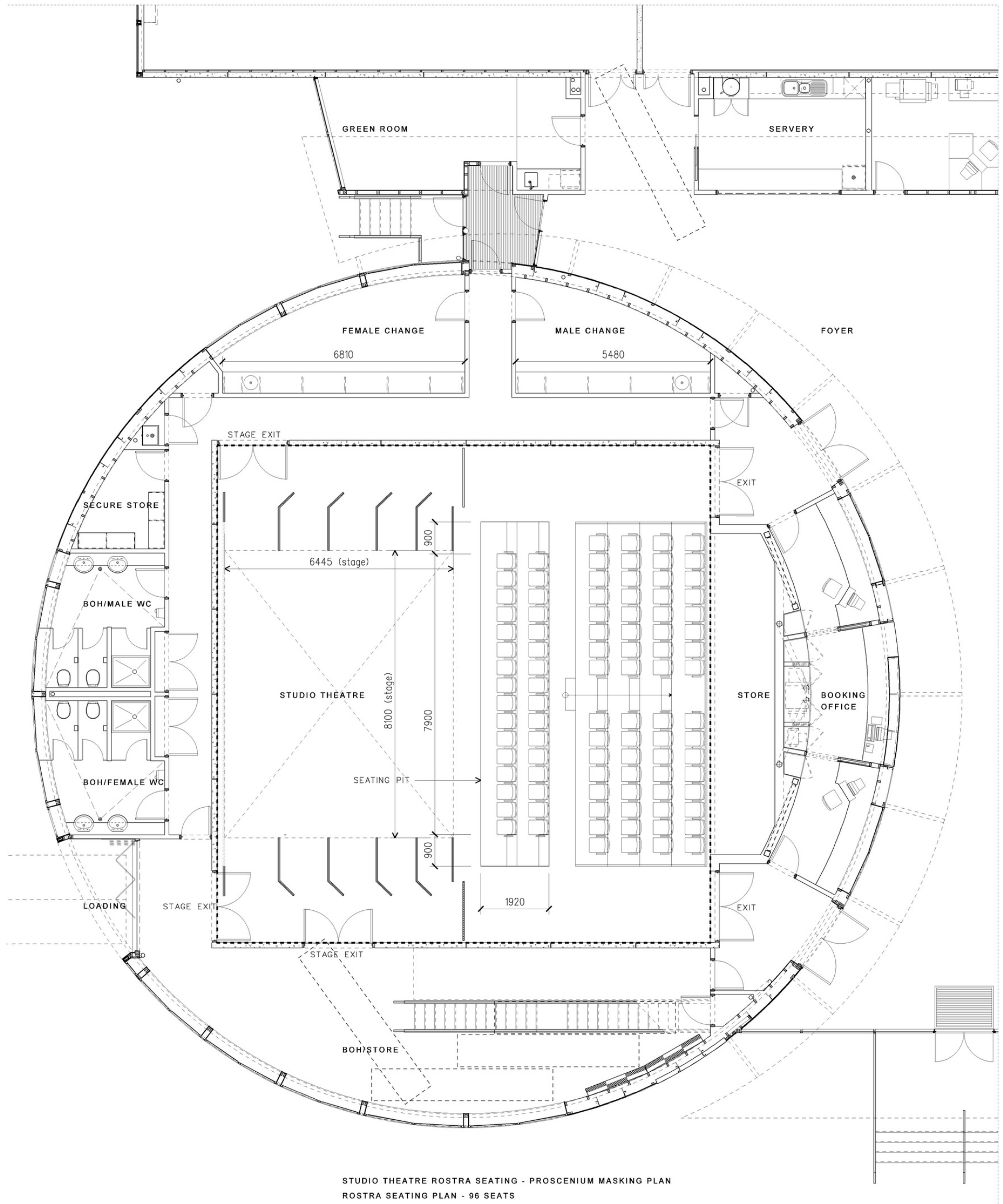
- Online \$2.50 per ticket, capped at \$7.50 per order
- Outlet Specific per outlet
- Phone \$6.00 per order

Delivery Fees

- eTicket Free of charge
- Post \$2.00 per order
- Courier - Non-signature \$4.00 per order
- Courier - Signature required \$5.00 per order
- Courier - Rural address \$9.00 per order



Floor Plan



Seating Plans

TAPAC has four movable seating blocks that may be arranged in several configurations. Cabaret style floor plans are also available, with tables available for hire.

We have a seating pit available for use, to further increase tiered seating capacity. Please be aware that this seating option does minimally diminish the stage size.

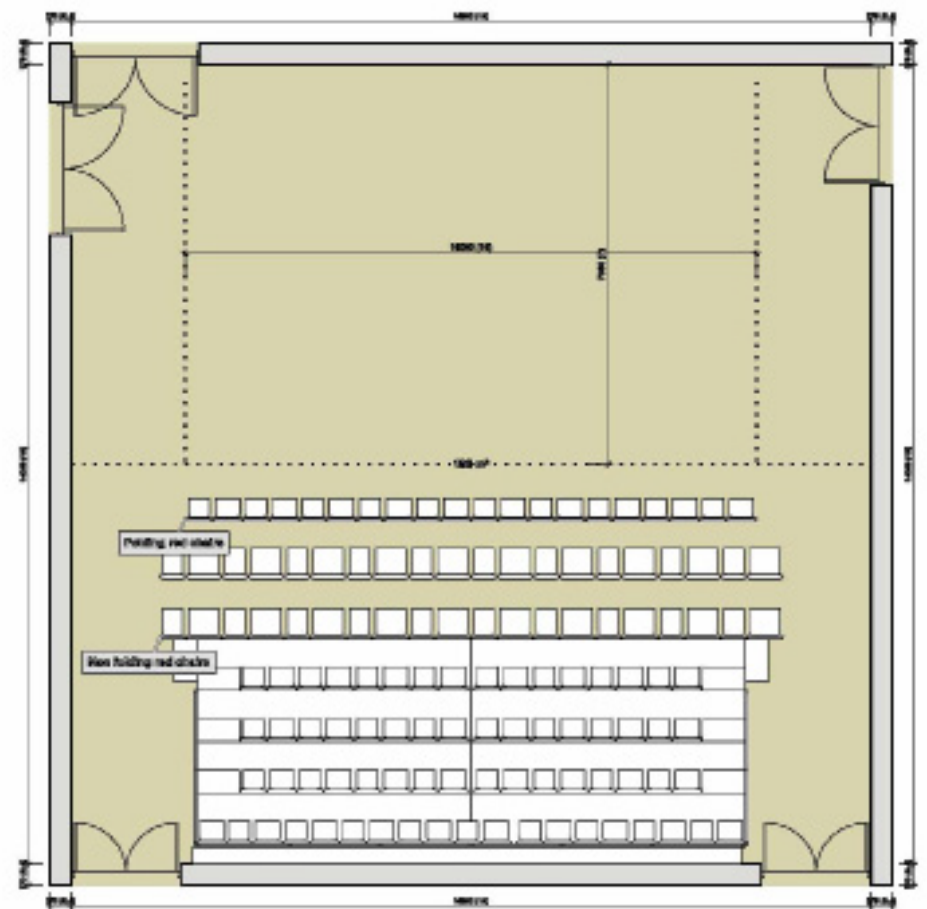
Below is a series of our most commonly used seating plans. If you feel that an alternative configuration would best suit your production, please let the TAPAC team know as soon as possible.

Please be aware that any alterations to the standard seating plan incur additional costs in labour and time. It is an expectation that the theatre be returned to this state at the end of all hires.

STANDARD SEATING PLAN

The standard floor plan of the theatre is an end-on configuration, with three rows of floor seating. The total capacity for this set-up is 127 patrons.

Floor rows can be easily removed to increase stage space. The capacity of the seating block in this configuration is 66 patrons.

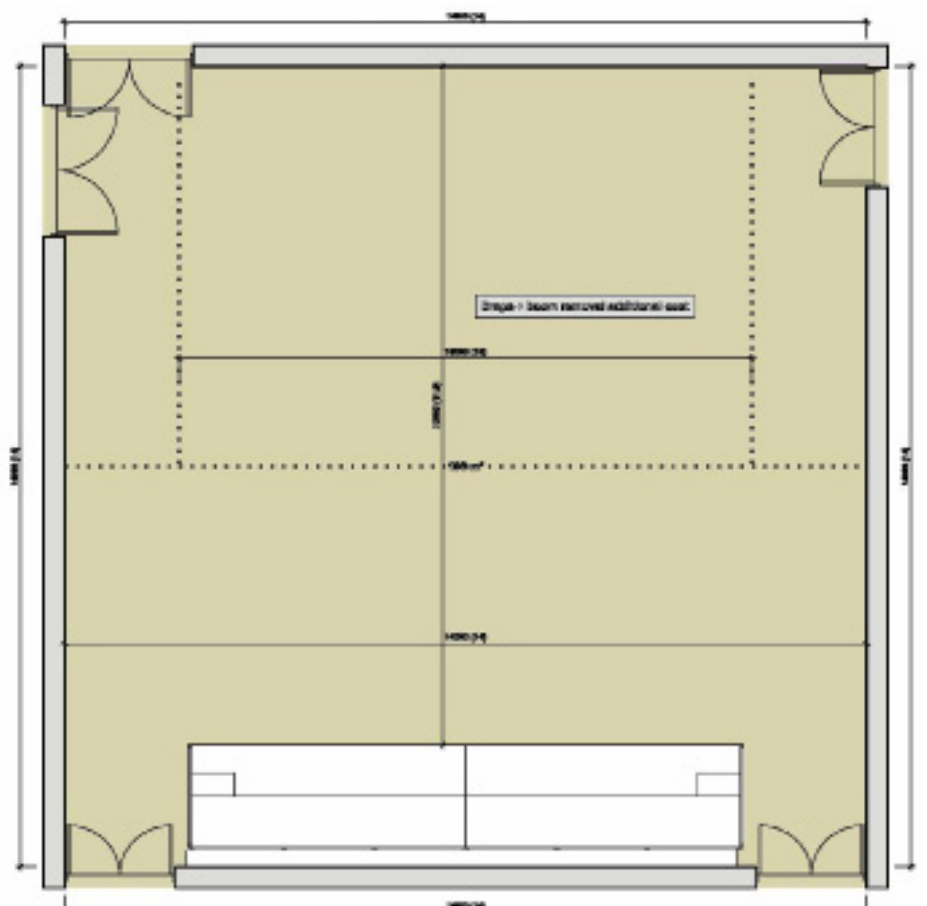


FLOOR SEATING ONLY

Our seating blocks can be retracted to increase floor space. These seating blocks must remain in the theatre, but are movable to best suit your vision of the space.

Floor seating can then be arranged as needed but must adhere to safety regulations. TAPAC staff will advise when this becomes a factor.

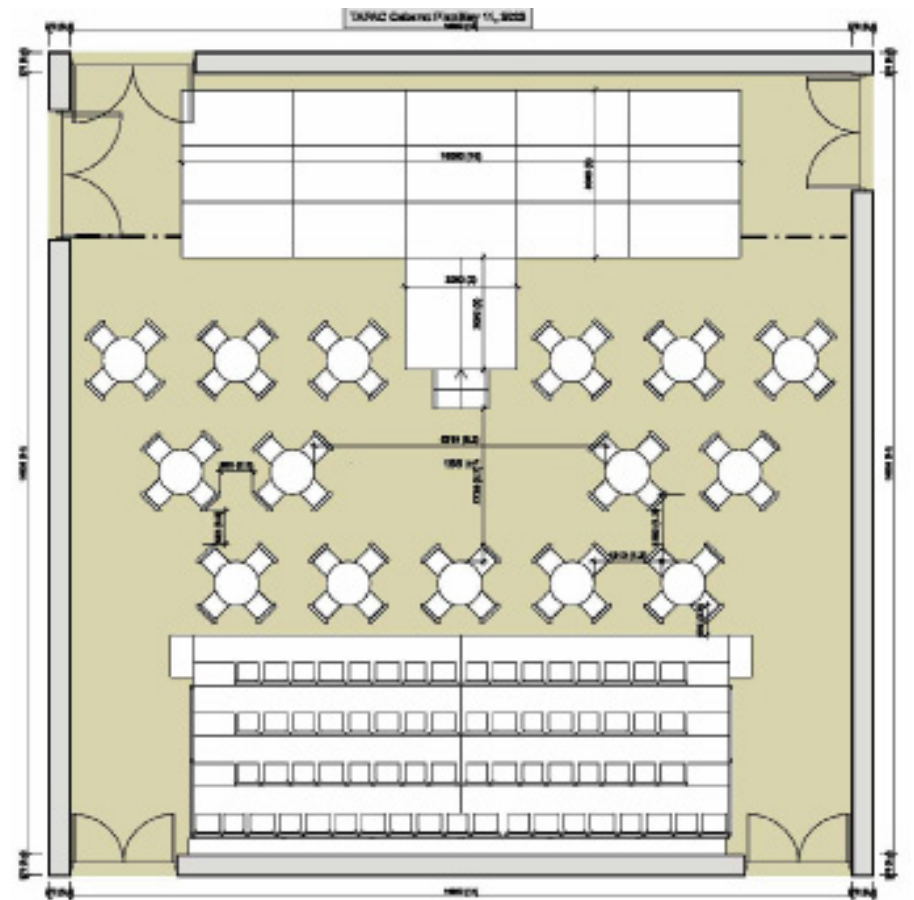
On the right is a layout of the theatre with the seating block retracted and kept at the back of the space.



CABARET CONFIGURATION ONE

Our cabaret layouts utilise the standard end-on seating block, cafe style tables and stage decks to create an engaging and immersive floor plan.

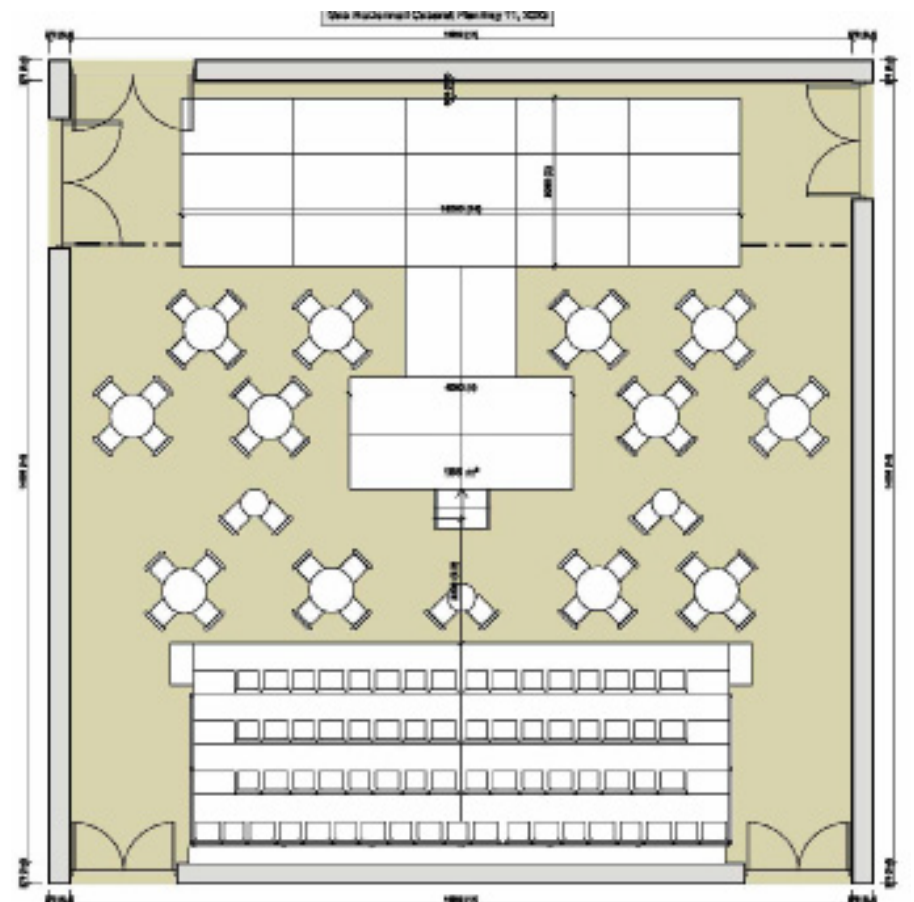
This particular model seats a total of 126 patrons, with 66 patrons in the seating block and 60 patrons at tables of 4. The stage decks have an area of 32 m² for performance.



CABARET CONFIGURATION TWO

Our cabaret layouts utilise the standard end-on seating block, cafe style tables and stage decks to create an engaging and immersive floor plan.

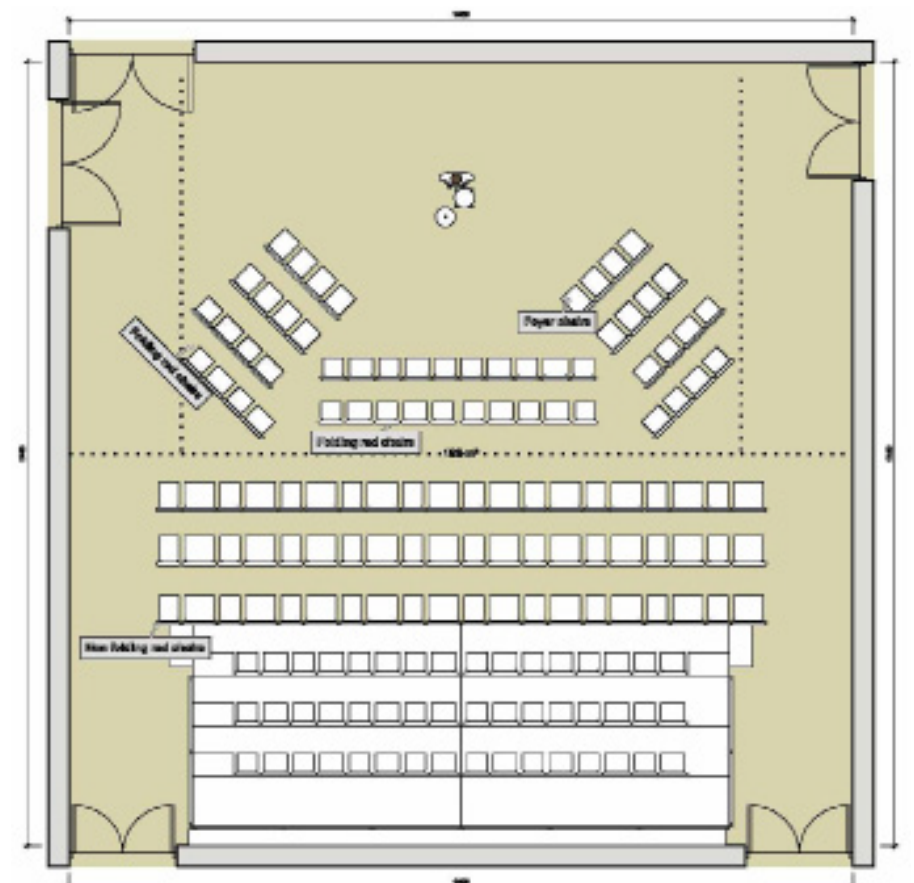
This particular model seats a total of 120 patrons, with 66 patrons in the seating block, 48 patrons at tables of 4 and 6 patrons at tables of 2. The stage desks have an area of 44 m² for performance.



INCREASED SEATING CAPACITY

Shows that require a minimal stage size have the option for increased flat seating. The plan below has a capacity of 160 patrons and enough room for a static performer (designed for comedy shows).

Please be aware that the stage legs and booms (side curtains and lights) need to be removed for this seating arrangement.



Equipment

HAZE AND ISOLATION

TAPAC has an Atari HZ - 500 Haze Machine available for use.

The consumable fluid is included in the hire of this machine.

Please advise the TAPAC team if you intend to use this machine during your booking, so that fire alarm isolation can be organised for you.

SOUND

TAPAC's sound system consists of a Behringer X32 Producer connecting into 2 way lines (1 for inputs, 1 for outputs) and a 8 channel snake connecting to wireless mic receivers. The general sound setup consists of 2 FOH (DB Opera 12), 2 side stage monitors (DB Opera 12), and 2 subs (DB Sub 615) which are mirrored left/right.

LIGHTING

TAPAC's lighting system consists of an ETC Ion XE20 connecting to a 5-way DMX splitter in a DMX patch bay. The general rig consists of a general warm & cool wash, 3 generic specials, 6 2K high sides, a 4 colour cyc (RGBY), LED Top lights, and 6 booms consisting of a lower profile, mid par, and high LED PAR. The general rig is fluid however and at times may contain additional fixtures.

PORTABLE DANCE FLOOR

TAPAC has 7 rolls of 9.8m by 2m and one roll of 8.6m by 1.6m. This flooring is black on one side and white on the other.

Please be advised that the white side shows signs of age. If a clean, white dance floor is needed, please explore external hirers.

Our pricing rubric for the dance floor is a \$20.00 flagfall charge per roll and \$2.00 per roll, per day. All prices exclude GST.

STAGE DECKS

TAPAC has 24 stage decks measuring 1m x 2m in length, and a matching set of legs that sit 600mm high. These stage decks can be put together in any configuration and the total area of all decks is 48m².

We also have two sets of stairs that are compatible with our staging.

Our stage decks are free for use while you're hiring the theatre. The off-site hire pricing rubric is \$25 per deck, per day and the total for our entire stage decking is \$600 + GST. Long term hires (3 days or more) are discounted at a sliding scale.

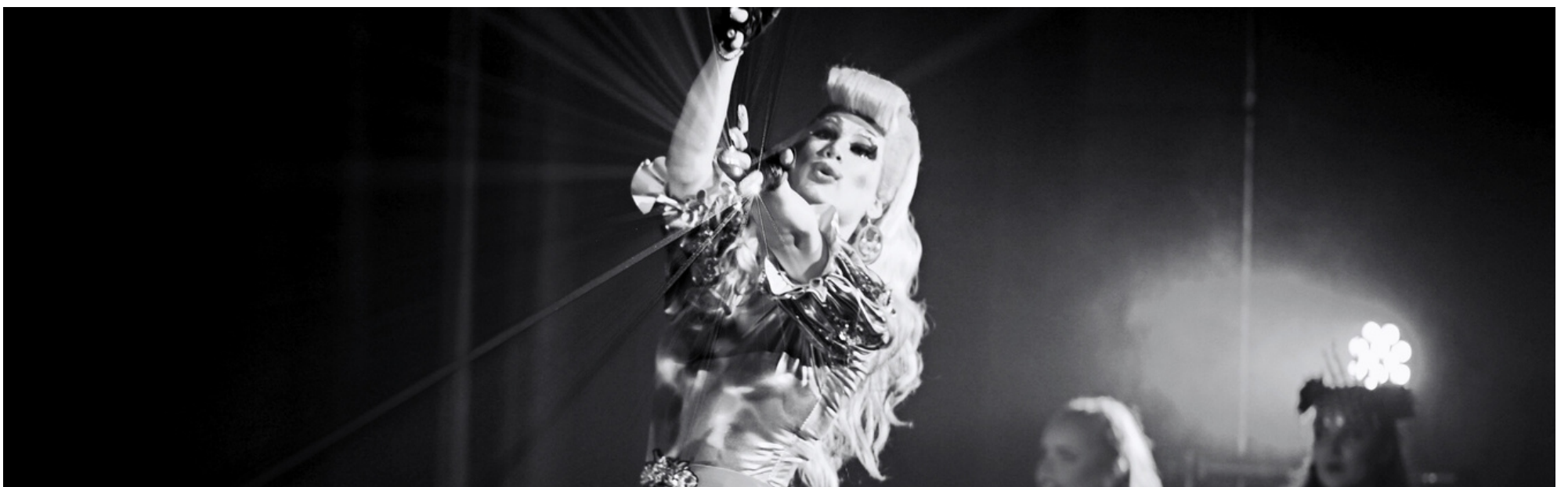
BUBBLE MACHINE

TAPAC has two commercial grade bubble machines that utilise mains power to operate. All hires include bubble fluid.

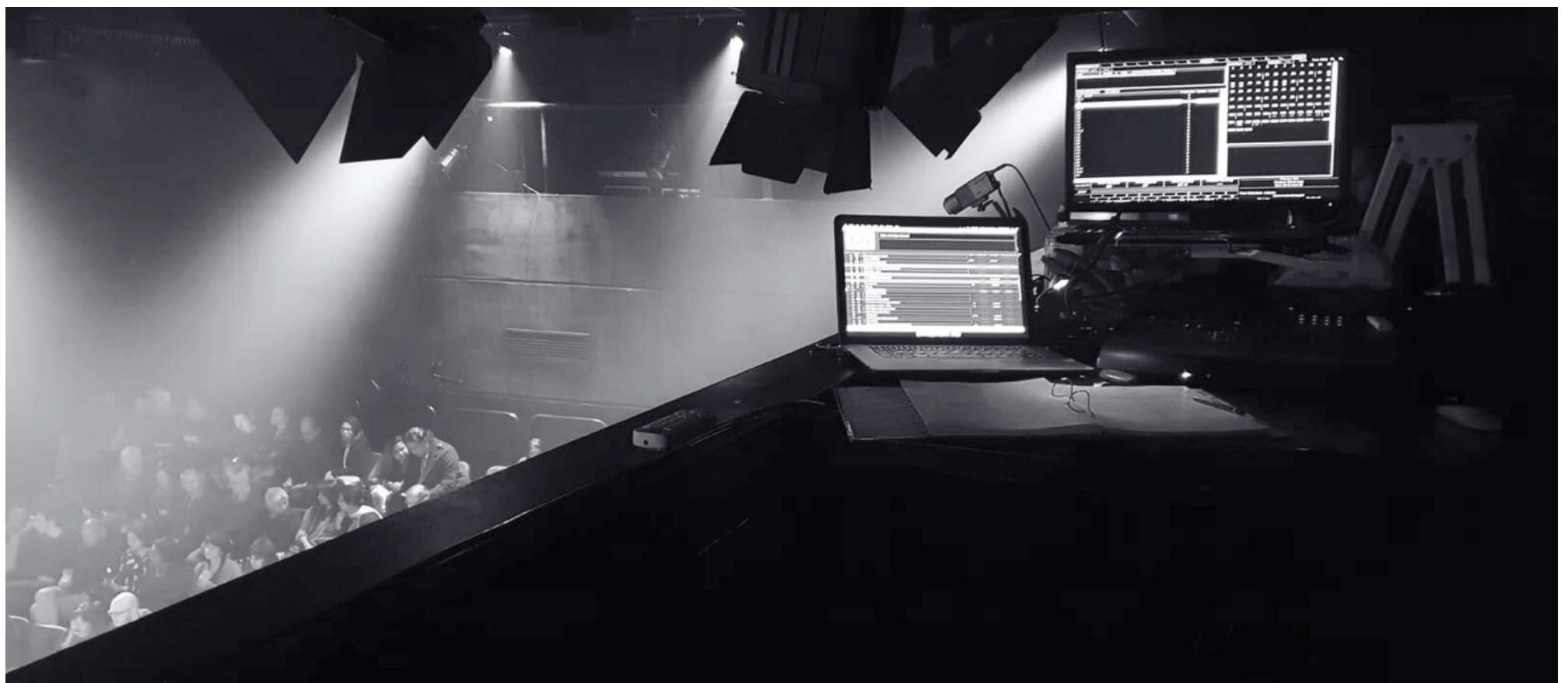
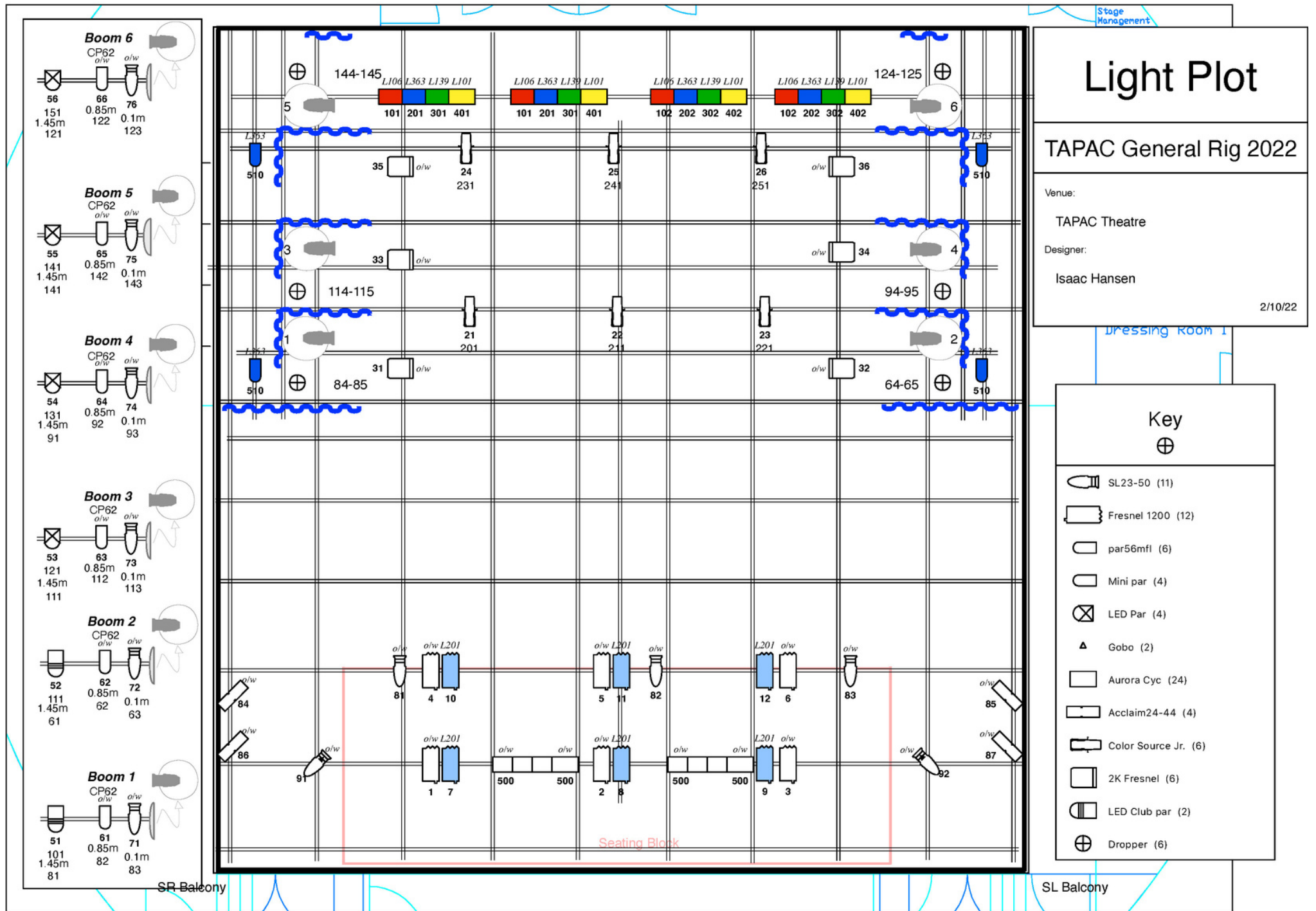
Off-site hire typically starts at \$50/day + GST, with long term hires discounted on a sliding scale.

PROJECTOR

TAPAC has a Panasonic PT-EZ580E 5400Lm Widescreen Projector for use. Projecting onto the cyc, this projector is appropriate for low to mid scale projection needs. It is not appropriate for projection mapping, or projection requiring resolution above HD.



Overhead Lighting Rig



Get In Touch

Please email bookings@tapac.org.nz to enquire about availability.

Hiring our theatre comes with support from TAPAC's dedicated team, who work to provide high quality marketing and technical support for clients of all background and experience.

Funding may be available for those whose projects qualify.

If you have a query, please reach out.

